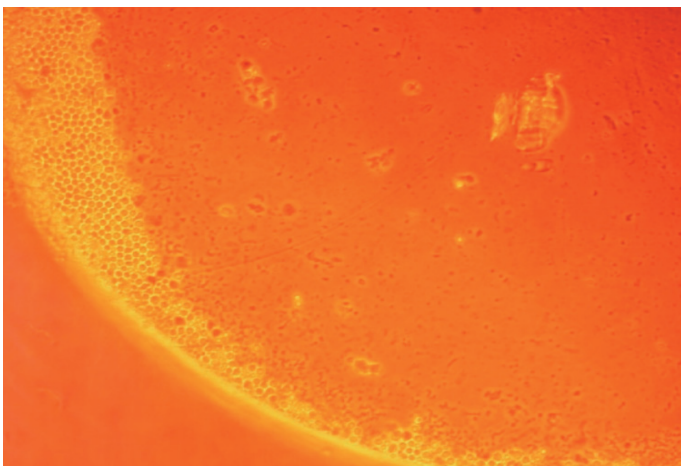


# Lymphofix

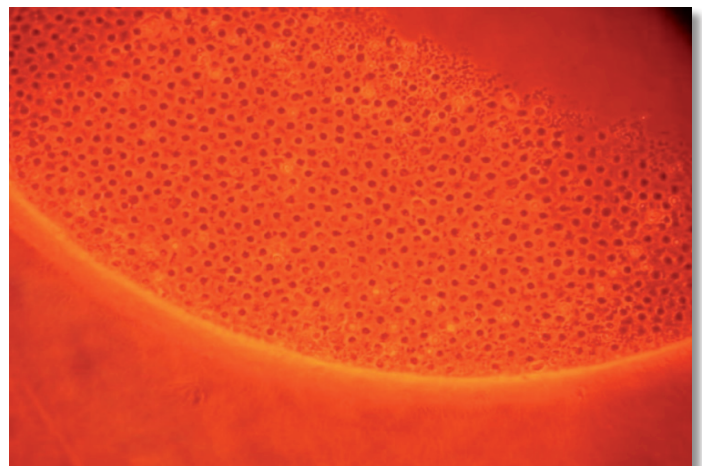
**NEW**

## One-step staining and fixing of lymphocytes in microcytotoxicity assay

- Ready-to-use mixture of cell stain and fixing reagents
- Staining and fixing of cells in one step
- Saves time, only 15 minutes incubation time
- Reduction of non-specific false positive reactions
- Replaces the traditional 2-step eosin and formalin procedure for tissue typing and serum screening



Lymphofix cannot enter the cells. Living cells look small, bright, and round in phase contrast microscope.



Lymphofix penetrates lysed cells. Dead cells look larger, dark (red), and noncircular.

Article No. 002 047 500    Lymphofix, 500 ml