

HLA-Ready Gene/+Taq

THE SSP-PCR SYSTEM

CE certified detection of HLA-class I and II alleles

NOW AVAILABLE:

- READY GENE ONLINE SOFTWARE
- TAQ INCLUDED IN BUFFER

Ready Gene

SuBiTo

FluoGene

Software

PCR & Electrophoresis

Ready Plate

DNA-Extraction

Life Science

HLA-READY GENE

HLA-Ready Gene A, -B, -C, -DRB1/3/4/5, -DQA1, -DQB1, -DPA1 AND -DPB1

- Integrated detection of the null alleles A*24:09N, B*51:11N, C*04:09N, DRB4*01:03N, DRB5*01:08N
- Integrated negative control
- Short analysis due to allele specific amplification
- Regular update of allele list
- Simplified interpretation by given allele frequencies
- Pre-aliquoted and dried primer mixes
- Colour coded kits
- Reduction of mistakes by means of changing internal control amplicates
- Flexibility due to combination of the PCR trays
- One PCR programme for all systems
- Identical workflow with protocol sheets adapted for all kits
- Evaluation by Ready Gene Online software
- CE certified for IvD use

HLA-READY GENE^{+Taq}: The new HLA-Ready Gene kits with Taq included

NEW

- Full plate kits HLA-Ready Gene ABC^{+Taq}, ABDR^{+Taq}, DRDQDP plus^{+Taq} with Taq polymerase included in the buffer
- HLA-Ready Gene DRDQDP plus^{+Taq} with DQ/DP alpha and beta-chains
- More safety - whole system is CE certified
- More comfort - 1 tube of ReadyMix including Taq per typing
- Quicker assay performance - less hands-on time

READY GENE ONLINE SOFTWARE

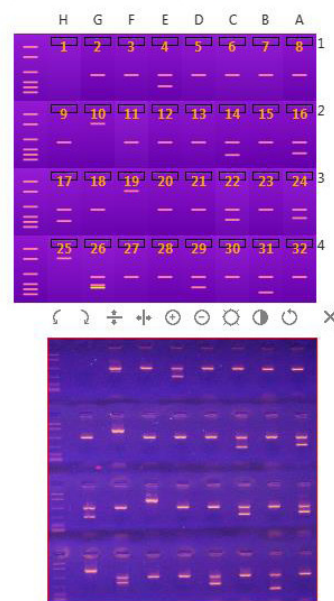
NEW

GENERAL

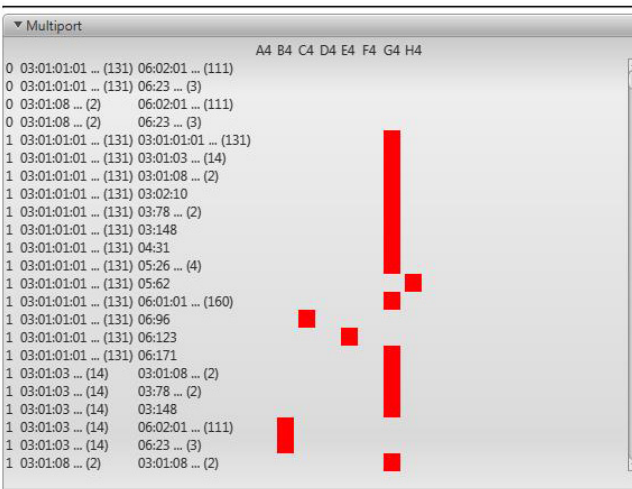
Ready Gene Online



(Enter Charge) Select Kit **HLA-DRDQ** Select Lot Number **G957065** Your Sample Number **2016041101**



HLA-DRB1 *11 *15 DR11(5),DR11(5)/DR13(6) | DR15(2),DR2 [N]
HLA-DQB1 *03 *06 DQ7(3),DQ8(3),DQ6(1) | DQ6(1) [N, Q]
 DRB3/4/5 DRB3*pos DRB5*pos



→|

- ▶ Allel-selection
- ▶ Results displaying
- ▶ Window
- ▶ Gel size
- ▶ Gel orientation
- ▶ Appearance
- ▶ Misc
- ▶ Local folders
- ▶ Multiport
- ▶ Report

ORDER INFORMATION

ARTICLE NO.	HLA-READY GENE	REACTIONS/TEST	TESTS/KIT
002 050 040	HLA-Ready Gene A SSP based low resolution typing of HLA-A alleles	24	40
002 051 020	HLA-Ready Gene B SSP based low resolution typing of HLA-B alleles	48	20
002 052 040	HLA-Ready Gene C SSP based low resolution typing of HLA-C alleles	24	40
002 053 010	HLA-Ready Gene ABC SSP based low resolution typing of HLA-class I alleles	96	10
002 054 010	HLA-Ready Gene ABDR SSP based low resolution typing of HLA-class I & II alleles	96	10
002 055 040	HLA-Ready Gene DR SSP based low resolution typing of HLA-DRB1, 3, 4, 5 alleles	24	40
002 068 048	HLA-Ready Gene DQA1 SSP based low resolution typing of HLA-DQA1 alleles	8	12
002 056 048	HLA-Ready Gene DQ SSP based low resolution typing of HLA-DQB1 alleles	8	48
002 057 030	HLA-Ready Gene DRDQ SSP based low resolution typing of HLA-class II alleles	32	30
002 067 020	HLA-Ready Gene DPB1 SSP based high resolution typing of HLA-DPB1 alleles	48	20

002 SWR Goo

Ready Gene Online Software

NEW

ARTICLE NO.	HLA-READY GENE ^{+Taq}	REACTIONS/TEST	TESTS/KIT
002 053 010T	HLA-Ready Gene ABC ^{+Taq} SSP based low resolution typing of HLA-class I alleles	96	10
002 054 010T	HLA-Ready Gene ABDR ^{+Taq} SSP based low resolution typing of HLA-class I & II alleles	96	10
002 069 010T	HLA-Ready Gene DRDQDP plus ^{+Taq} SSP based low resolution typing of HLA-DRB1, 3, 4, 5, DQA1, DQB1, DPA1 and DPB1 alleles	96	10

NEW

ARTICLE NO.	OTHER READY GENE ARTICLES	REACTIONS/TEST	TESTS/KIT
002 060 040	KIR Ready Gene KIR genotyping – for research use only	24	16
002 063 064	Ready Gene Wipe Test	64 Reactions	



Niederhöchstädter Straße 62
D-61476 Kronberg/Taunus Germany

Tel. +49 (0)6173- 6079- 30
Fax: +49 (0)6173- 6079-50

E-mail: info@inno-train.de
Web: www.inno-train.de