

# HLA-Ready Plate

## THE SEROLOGY

CE certified detection of HLA class I and II & B27 antigens

Ready Gene

SuBiTo

FluoGene

Software

PCR & Electrophoresis

Ready Plate

DNA-Extraction

Life Science

## HLA-Ready Plate SYSTEMS FOR SEROLOGICAL TYPING OF HLA ANTIGENS:

The ready-to-use trays are available for HLA class I and II antigen detection in different sizes.

ARTICLE NO.	ARTICLE	TYPINGS
002 011 144	<b>HLA-Ready Plate ABC 144</b> 2 trays with each 72 HLA antisera per test 5 x 1 ml lyophilized rabbit complement	5
002 010 144	<b>HLA-Ready Plate AB 144</b> 2 trays with each 72 HLA antisera per test 5 x 1 ml lyophilized rabbit complement	5
002 011 120	<b>HLA-Ready Plate ABC 120</b> 2 trays with each 60 HLA antisera per test 5 x 1 ml lyophilized rabbit complement	5
002 010 120	<b>HLA-Ready Plate AB 120</b> 2 trays with each 60 HLA antisera per test 5 x 1 ml lyophilized rabbit complement	5
002 012 072	<b>HLA-Ready Plate ABC 72</b> 1 tray with 72 HLA HLA antisera per test 5 x 1 ml lyophilized rabbit complement	10
002 014 072	<b>HLA-Ready Plate AB 72</b> 1 tray with each 72 HLA antisera per test 5 x 1 ml lyophilized rabbit complement	10
002 013 072	<b>HLA-Ready Plate DR 72</b> 1 tray with each 72 HLA antisera per test 5 x 1 ml lyophilized rabbit complement	10
002 021 001	<b>HLA-Ready Plate B27/1</b> 1 tray with 12 HLA antisera per B27 test 5 x 1 ml lyophilized rabbit complement	10
002 022 002	<b>HLA-Ready Plate B27/2</b> 1 tray with 2x 12 HLA antisera for 2 test persons 5 x 1 ml lyophilized rabbit complement	20
002 023 005	<b>HLA-Ready Plate B27/5</b> 1 tray with 5x 12 HLA antisera for 5 test persons 5 x 1 ml lyophilized rabbit complement	50

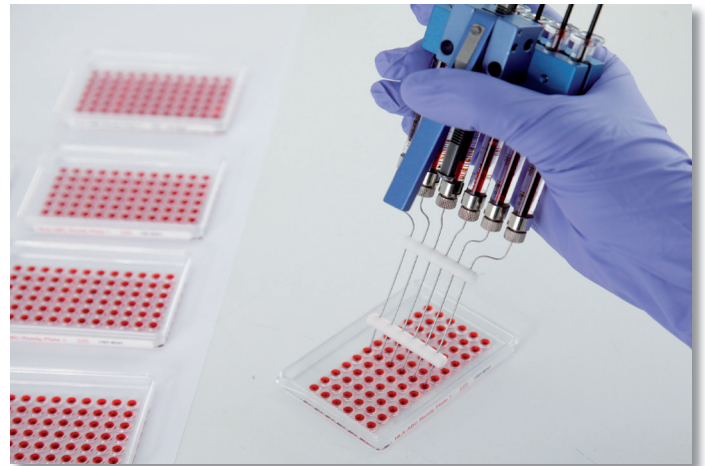
## HLA CLASS I ANTISERA:

Please ask for our current list.

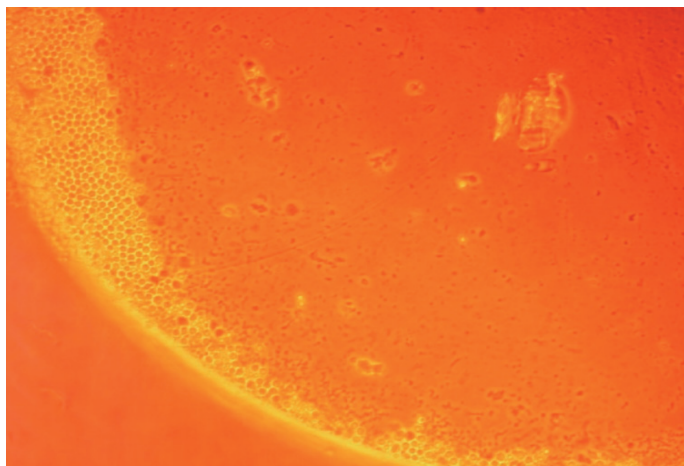
# HLA-Ready Plate

## MICROLYMPHOCYTOTOXICITYTEST

- Thaw Ready Plates 10 - 15 Minuten minutes before use.
- Dispense 1  $\mu$ l (2000 - 3000) lymphocytes to each well in the tray.
- Incubate at room temperature for 30 minutes (DR/DQ: 60 minutes).
- Thaw frozen rabbit complement or reconstitute lypholized complement.
- Add 5 - 6  $\mu$ l rabbit complement to each well and incubate at room temperature for 60 minutes (DR/DQ: 120 minutes).
- Add 3 - 4  $\mu$ l eosin (5%), wait 5 minutes, add 5 - 6  $\mu$ l formaldehyde (37%) for fixation.
- Cover with glass slides and read the Ready Plates with the inverted phase microscope.

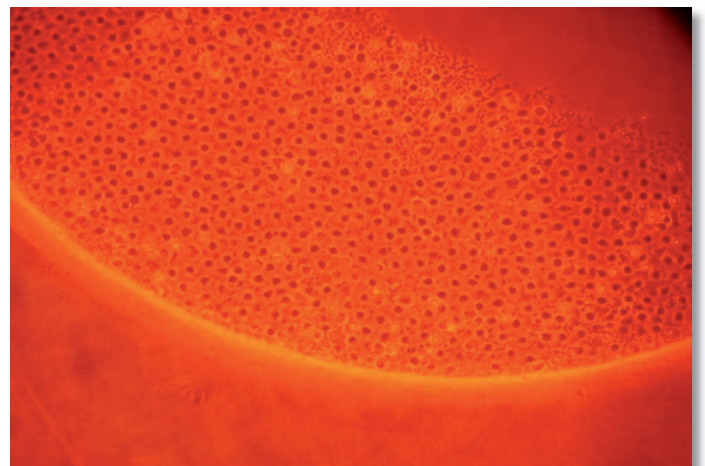


## RESULTS AND INTERPRETATION (EOSIN)



### Score 1, 0 - 10 %, negative reaction

Indicator stain (eosin) cannot enter the cells. Living cells look small, bright, and round in phase contrast microscope.



### Score 8, 81 - 100%, strong positive reaction

Indicator stain penetrates lysed cells. Dead cells look larger, dark (red), and noncircular.

## THE PERCENTAGE OF POSITIVE CELLS CAN BE REPORTED IN SCORES:

Score 1	0 - 10%	negative reaction
Score 2	11 - 20%	borderline negative reaction
Score 4	21 - 50%	borderline positive reaction
Score 6	51 - 80%	positive reaction
Score 8	81 - 100%	strong positive reaction
Score 0		no cells

## MEDIA AND REAGENTS FOR HLA-SEROLOGY:

ARTICLE NO.	ARTICLE	VOLUME
002 041 600	<b>Lymphodex</b> Lymphocyte Separating Medium	6 x 100 ml
002 041 500	<b>Lymphodex</b> Lymphocyte Separating Medium	500 ml

	density
thrombocytes	1.025 – 1.035
monocytes	1.065 – 1.075
<b>lymphocytes</b>	<b>1.070 – 1.080</b>
granulozytes	1.080 – 1.090
erythrocytes	1.085 – 1.115
<b>Lymphodex</b>	<b>1.077</b>

### Isolation of lymphocytes:

Mix 5 ml of heparinized blood (10 IU/ml) with 5 ml of Hanks Solution.

Place 3-4 ml of Lymphodex in centrifuge tube and cautiously fill the same volume of blood mix on top.

Centrifuge at 1000 g in brakeless centrifuge for 20 minutes.

Cautiously aspirate white rings of lymphocytes with a Pasteur pipet and wash with Hanks Solution.

Centrifuge at 250 x g, 175 x g, and 150 x g for 10 minutes each and re-suspend the pellet.

After the last centrifugation, dilute lymphocytes with Hanks Solution to a cell count of 2000 - 3000 cells /  $\mu$ l.

ARTICLE NO.	ARTICLE	VOLUME
002 042 600	<b>Hanks-Solution</b> Cell Washing Medium	6 x 100 ml
002 042 500	<b>Hanks-Solution</b> Cell Washing Medium	500 ml
002 043 500	<b>RPMI 1640</b> Cell Culture Medium	500 ml
002 044 005	<b>Rabbit complement</b> frozen	5 x 1 ml
002 044 005L	<b>Rabbit complement</b> lyophilized	5 x 1 ml
002 025 005	<b>HLA-Ready Plate ABC Complement</b> for complement activity testing (chess board titration)	5 Tests
002 045 001	<b>Anti-HLA positive control</b>	0,5 ml
002 045 002	<b>Anti-HLA negative control</b>	0,5 ml



Niederhöchstädter Straße 62  
D-61476 Kronberg/Taunus Germany

Tel. +49 (0)6173- 6079- 30  
Fax: +49 (0)6173- 6079-50

E-mail: info@inno-train.de  
Web: www.inno-train.de